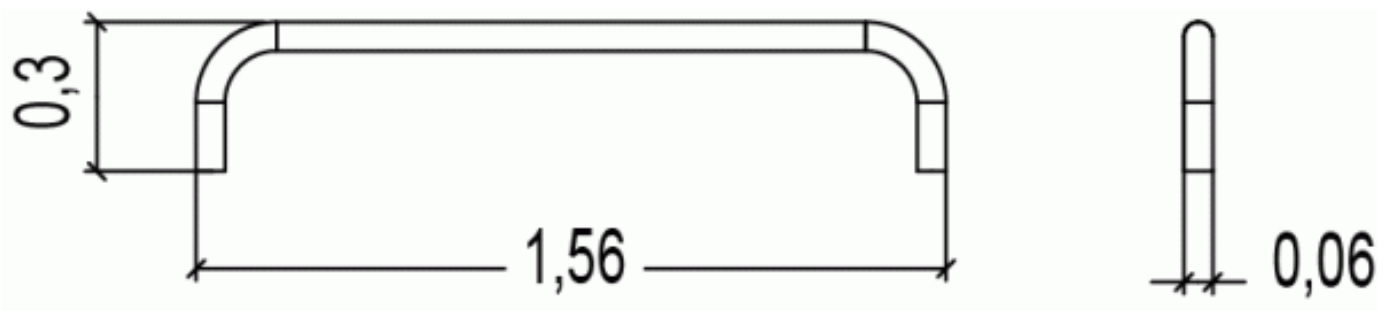
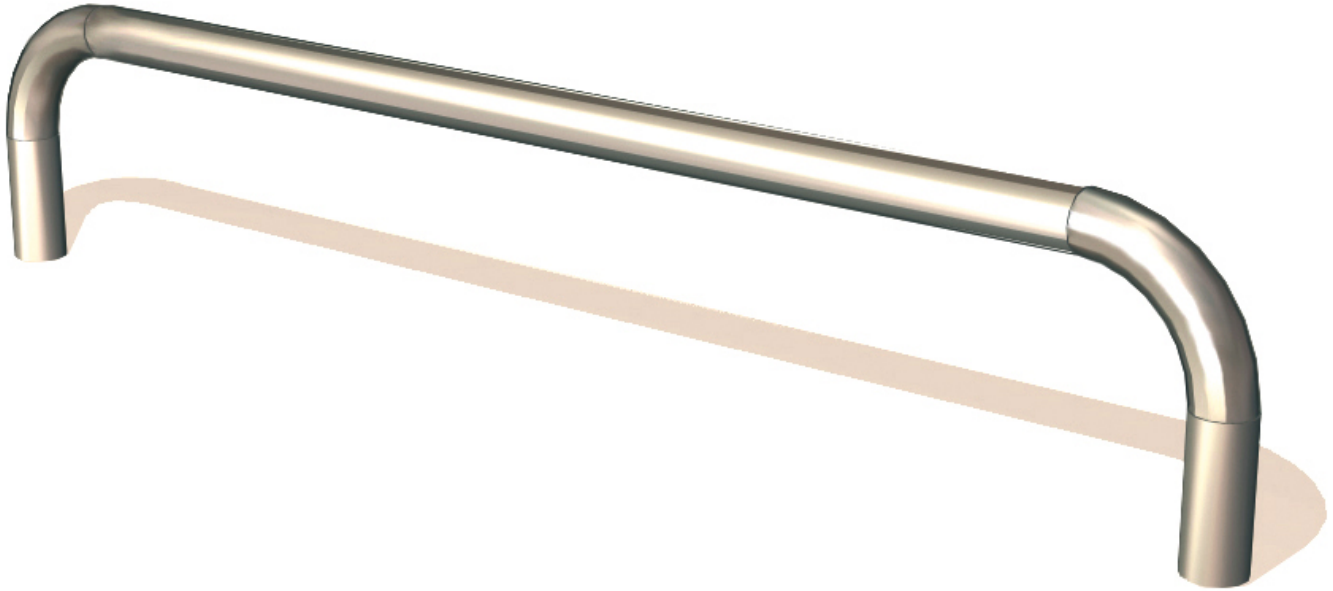


2+      2      0,3m

1 = 1,56m  
2 = 0,06m  
3 = 0,3m



Physical inclusion  
Sensory inclusion  
Cognitive inclusion



Play value : 1



balancing

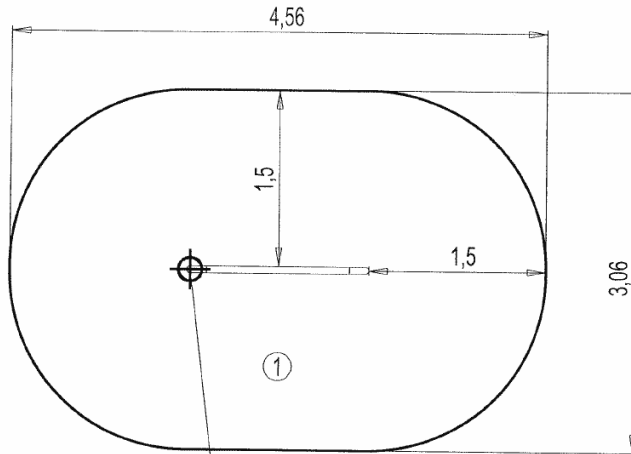


x1



## Installation of equipment

**IMPORTANT:** It is essential to refer to the installation instructions for information on the size of the safety areas.

-  Impact area (minimum normative surface)
-  Free space



Point de Référence  
Setting Out Point  
Punto de referencia  
Bezugspunkt

		
1	0,30m	12m <sup>2</sup>



1

00h30

0.06m<sup>3</sup>

12m<sup>2</sup>

10kg

9kg

EN  
1176