



5+



20



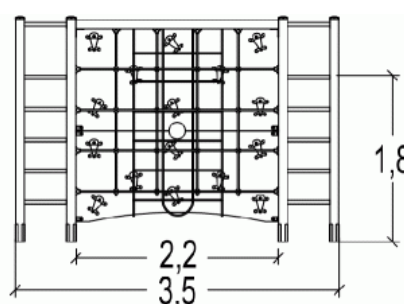
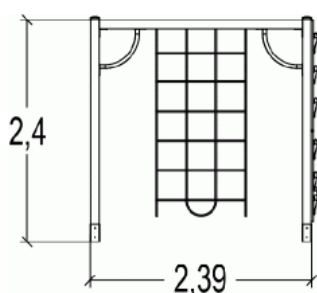
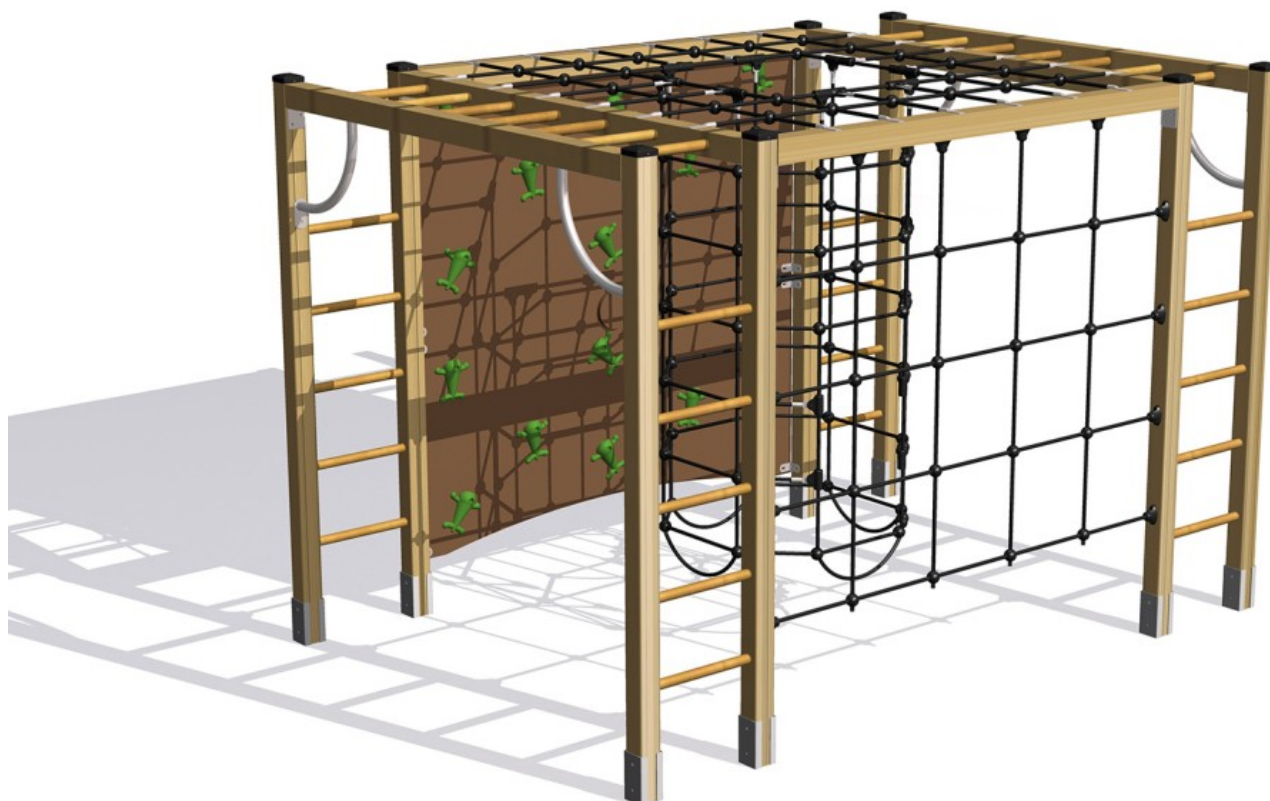
2,4m



1 = 3,5m
2 = 2,39m
3 = 2,4m



Physical inclusion
Sensory inclusion
Cognitive inclusion



Play value : **9**

hanging



x3

climbing



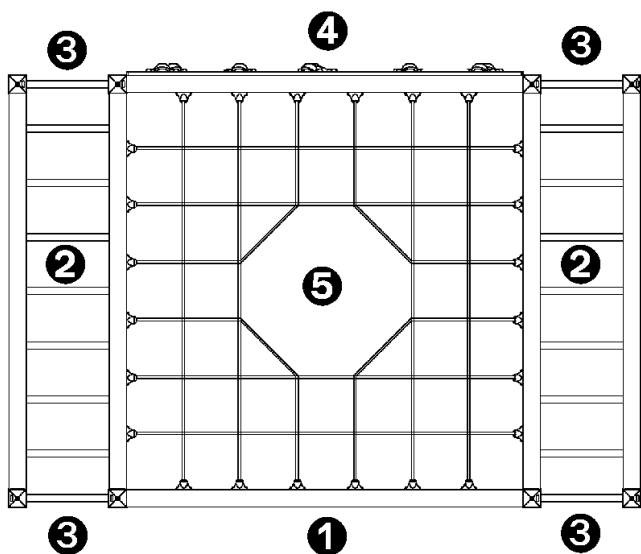
x2

getting across



x4



Components

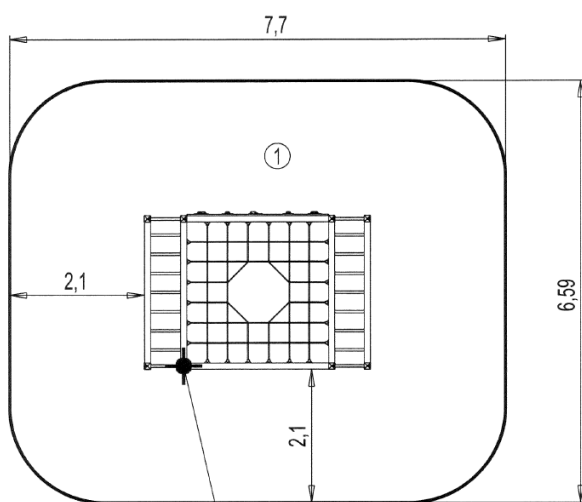


- ① Climbing net
- ② Suspension ladder
- ③ Step ladder
- ④ Climbing wall
- ⑤ Chimney net



Installation of equipment

IMPORTANT: It is essential to refer to the installation instructions for information on the size of the safety areas.

-  Impact area (minimum normative surface)
-  Free space



Point de Référence
Setting Out Point
Punto de referencia
Bezugspunkt

		
1	2,40m	49m ²



2



10h15



0.3m³



49m²



385kg



42kg

