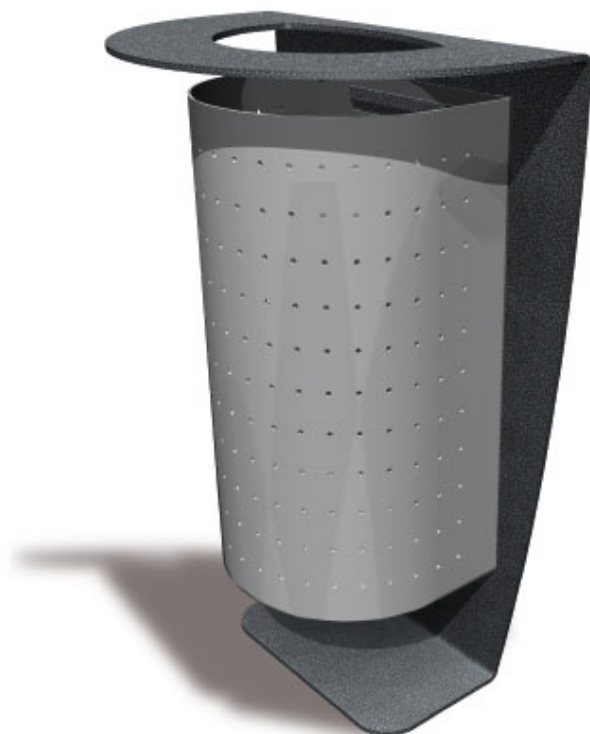
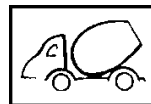




1=0.55m 2=0.36m 3=0.83m



INSTALLATION



0.07m³



00h00

OTHER INFORMATION

Total weight = 41 kg

Heaviest part = 41 kg

Painted steel mounting system and lid opening, thickness 8mm -
 painted perforated aluminium liner, thickness 3mm with 6mm rounds.
 Capacity 42 litres. Emptied by tipping - Lockable liner RAL 7004 -
 Fixing on to a concrete block

