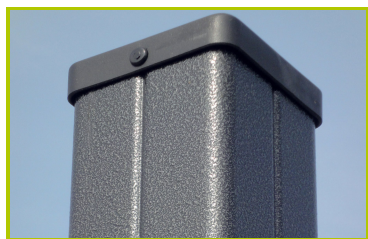


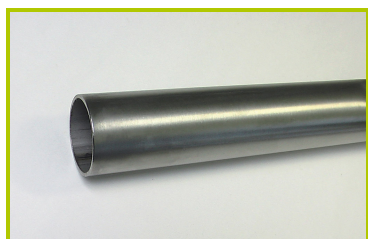
Slides

(technical specification)

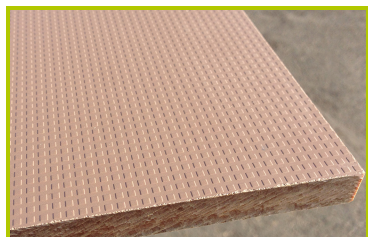
J1110



1- **The 95 x 95mm posts** are made of painted galvanised steel, ensuring robustness and durability. The caps are made of injection moulded polyamide.



2- **The tubes** are made of 40mm diameter stainless steel, guaranteeing lasting durability and reliability of the equipment.



3- **The platform** is made from a 12.5mm thick textured and non-slip compact material (HPL).



4- **The sliding surface** is made of 2mm thick stainless steel, which is shaped, bent and rolled from one piece.



5- **The fixings** are made of stainless or plated steel and protected by anti-vandalism polyamide caps.