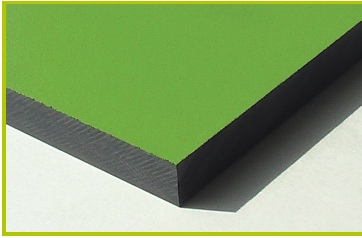




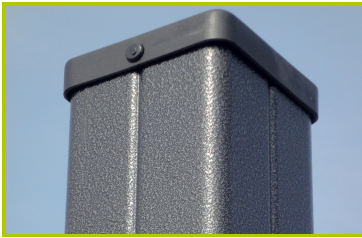
City

(technical specification)

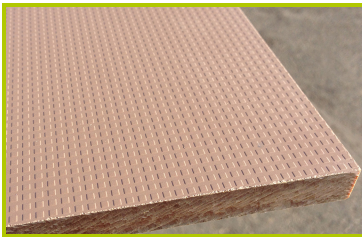
J2684



1- **The coloured panels** are made from a 13mm thick compact material (HPL). Robust in construction, it has excellent weather and vandal resistance properties.



2- **The 95 x 95mm posts** are made of painted galvanised steel, ensuring robustness and durability. The caps are made of injection moulded polyamide.



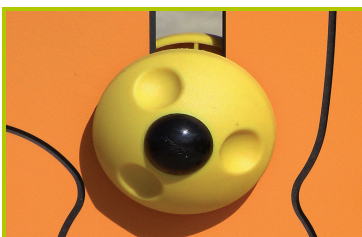
3- **The platforms** are made from a 12.5mm thick textured and non-slip compact material (HPL).



4- **The tubes** are made of 40mm diameter stainless steel, guaranteeing lasting durability and reliability of the equipment.



5- **The sliding surface** is made of 2mm thick stainless steel, which is shaped, bent and rolled from one piece.
The sides are made from a 13mm thick compact material (HPL).



6- **Plastic parts** are made of injected polyamide.



7- The **abacus spheres** are made of polycarbonate sheets.



8- The **fixings** are made of stainless or plated steel and protected by anti-vandalism polyamide caps.