



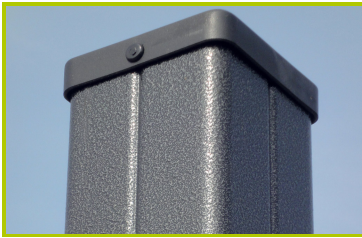
Diabolo

(technical specification)

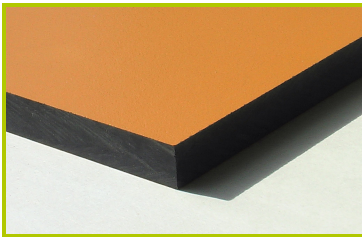
J38102



1- **The 125mm diameter posts** are made of painted galvanised steel, ensuring robustness and durability. The caps are made of injection moulded polyamide.



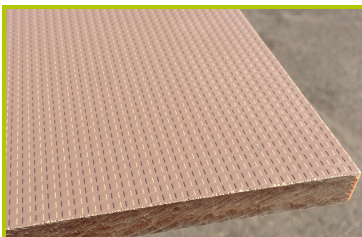
2- **The 95 x 95mm posts** are made of painted galvanised steel, ensuring robustness and durability. The caps are made of injection moulded polyamide.



3- **The coloured panels** are made from a 13mm thick compact material (HPL). Robust in construction, it has excellent weather and vandal resistance properties.



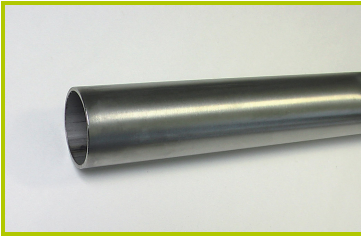
4- **The roof** is made of 10mm thick polyethylene plates.



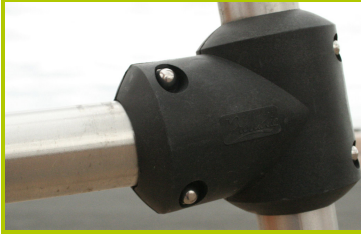
5- **The platform and the climbing wall** are made from a 12.5mm thick textured and non-slip compact material (HPL).



6- **The sliding surfaces** are made of 2mm thick stainless steel, which is shaped, bent and rolled from one piece.



7- **The tubes** are made of 40mm diameter stainless steel, guaranteeing lasting durability and reliability of the equipment.



8- **Injection moulded polyamide fixings** connect the posts with the platforms and the various play features. They are non-toxic, flameproof and U.V. resistant. The thickness of the polyamide makes the equipment both strong and vandal resistant.



9- **The 16mm diameter ropes** are made of galvanised steel cable covered with polyester. The cables are linked together and held in place by injected polyamide spheres.



10-**The climbing holds** are made of polypropylene. They are non-toxic, inflammable and shock and UV resistant.



11-**The abacus spheres** are made of polycarbonate sheets.



12-**The fixings** are made of stainless or plated steel and protected by anti-vandalism polyamide caps.