



2+



4



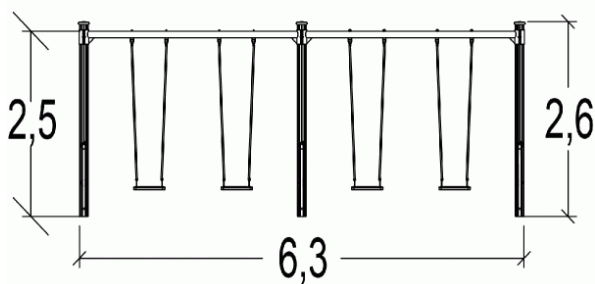
1,4m



1 = 6,3m
2 = 1,22m
3 = 2,6m



Physical inclusion
Sensory inclusion
Cognitive inclusion



Play value : **2**

meeting



x1



swinging

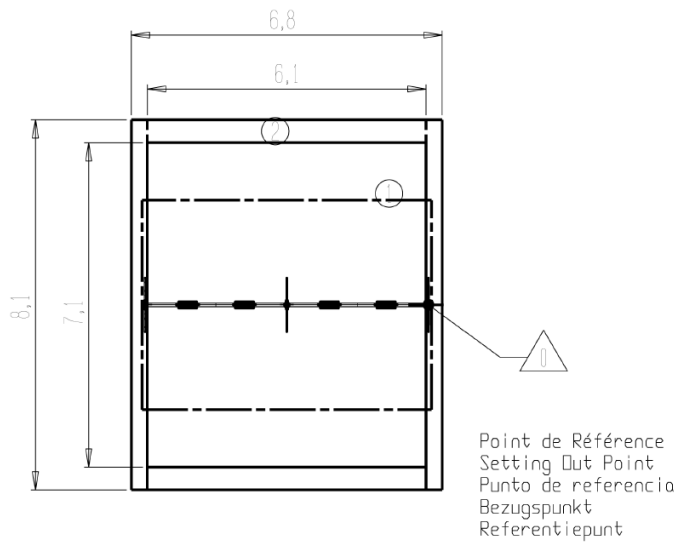




x1

Installation of equipment

IMPORTANT: It is essential to refer to the installation instructions for information on the size of the safety areas.

-  Impact area (minimum normative surface)
-  Free space



		
1	1,4m	43,5m ²
2	1,4m	55m ²



2



03h00



1.3m³



43.5m²



149kg



30kg

