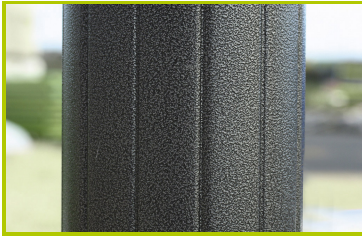




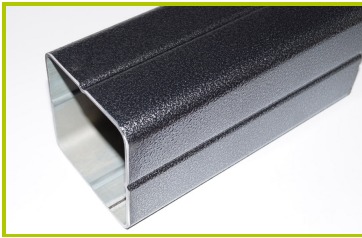
Adventure

(technical specification)

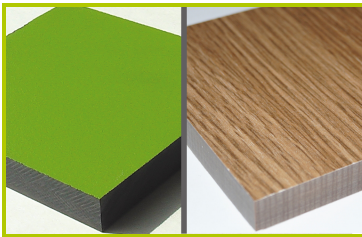
J2687



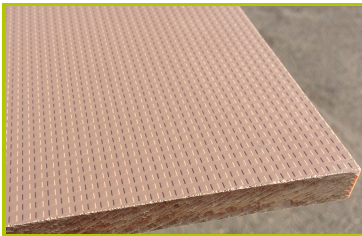
1- **The 125mm diameter posts** are made of painted galvanised steel. The grained finish has a slightly undulating surface for increased scratch resistance.



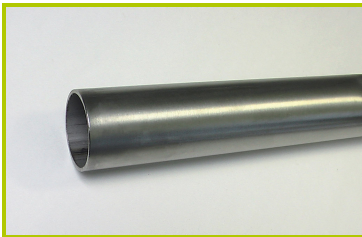
2- **The 95 x 95mm posts** are made of painted galvanised steel, ensuring robustness and durability. The caps are made of injection moulded polyamide.



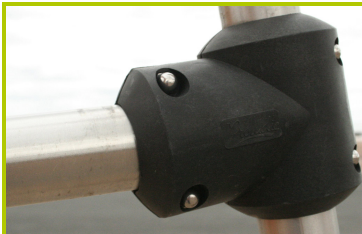
3- **The coloured panels** are made from a 13mm thick compact material (HPL). Robust in construction, it has excellent weather and vandal resistance properties.



4- **The platforms** are made from a 12.5mm thick textured and non-slip compact material (HPL).



5- **The tubes** are made of 40mm diameter stainless steel, guaranteeing lasting durability and reliability of the equipment.



6- **Injection moulded polyamide fixings** connect the posts with the platforms and the various play features. They are non-toxic, flameproof and U.V. resistant. The thickness of the polyamide makes the equipment both strong and vandal resistant.



7- **The tubular slide** is made of rotomoulded polyethylene.



8- **The steps of the catwalk** are made with a non-slip rubber overmould.



9- **The 16mm diameter ropes** are made of galvanised steel cable covered with polyester. The cables are linked together and held in place by injected polyamide spheres.



10-**The ladder rungs** are made of acacia wood which is naturally rot-resistant and smooth to the touch. They are mounted on a 16mm diameter polyester cable.



11-**The fixings** are made of stainless or plated steel and protected by anti-vandalism polyamide caps.