

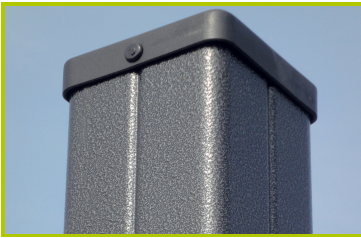


## City (technical specification)

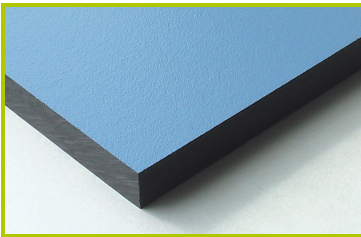
J2690



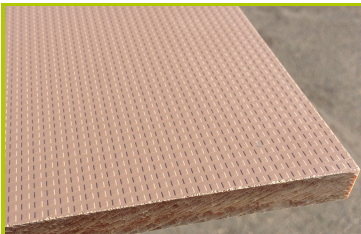
1- **The 125mm diameter posts** are made of painted galvanised steel, ensuring robustness and durability. The caps are made of injection moulded polyamide.



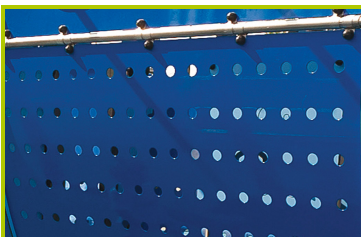
2- **The 95 x 95mm posts** are made of painted galvanised steel, ensuring robustness and durability. The caps are made of injection moulded polyamide.



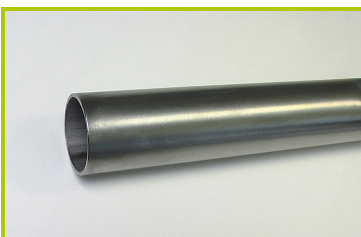
3- **The coloured panels** are made from a 13mm thick compact material (HPL). Robust in construction, it has excellent weather and vandal resistance properties.



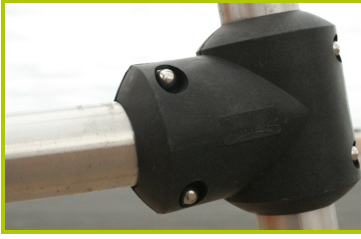
4- **The platforms** are made from a 12.5mm thick textured and non-slip compact material (HPL).



5- **The cabin** is made of 3mm thick perforated aluminium coated with polyester epoxy lacquer.



6- **The tubes** are made of 40mm diameter stainless steel, guaranteeing lasting durability and reliability of the equipment.



**7- Injection moulded polyamide fixings** connect the posts with the platforms and the various play features. They are non-toxic, flameproof and U.V. resistant. The thickness of the polyamide makes the equipment both strong and vandal resistant.



**8- The sliding surface** is made of 2mm thick stainless steel, which is shaped, bent and rolled from one piece. The sides are made from a 13mm thick compact material (HPL).



**9- The anti-slip steps** are made of corrugated aluminium sheets ensuring durability and lasting good looks.



**10-The swing seats** are made of shock absorbing moulded honeycomb rubber. The swing chains are made of stainless steel. The seat fixing brackets are made of 10mm stainless steel wire. PVC sliding rings are fitted to limit the wear of the metal parts over time. The rings are accessed by a vandal proof, stainless steel shackle.



**11-The pod** is made from a single piece of 30%-recycled rotomoulded polyethylene. It is fixed to a stainless steel frame that is fitted with buffers. The pod is suspended from galvanised steel ropes covered by PVC.



**12-The pod swing seat for early childhood** is made of polyurethane, which ensures a comfortable seating. The swing chains are made of stainless steel.



**13-The climbing holds** are made of polypropylene. They are non-toxic, inflammable and shock and UV resistant. They give the units their strength and help to protect them from vandalism.



**14-The fixings** are made of stainless or plated steel and protected by anti-vandalism polyamide caps.