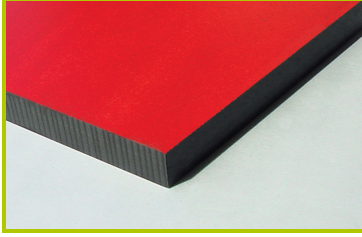




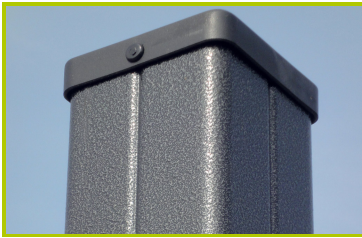
City

(technical specification)

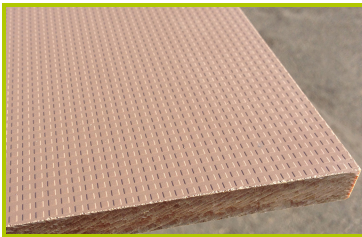
J4039



1- **The coloured panels** are made from a 13mm thick compact material (HPL). Robust in construction, it has excellent weather and vandal resistance properties.



2- **The 95 x 95mm posts** are made of painted galvanised steel, ensuring robustness and durability. The caps are made of injection moulded polyamide.



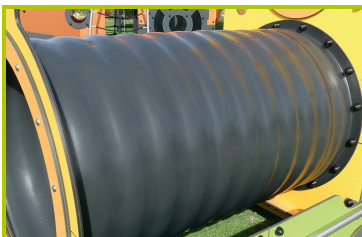
3- **The platforms, the steps and the climbing wall** are made from a 12.5mm thick textured and non-slip compact material (HPL).



4- **The tubes** are made of 40mm diameter stainless steel, guaranteeing lasting durability and reliability of the equipment.



5- **The 16mm diameter ropes** are made of galvanised steel cable covered with polyester. The cables are linked together and held in place by injected polyamide spheres.



6- **The tunnel** is made of 100% recycled rotomolded polyethylene, 45cm in diameter (RAL 9005).



7- **The sliding surface** is made of 2mm thick stainless steel, which is shaped, bent and rolled from one piece.



8- **The climbing holds** are made of polypropylene. They are non-toxic, inflammable and shock and UV resistant.



9- **Plastic parts** are made of injected polyamide.



10-**The fixings** are made of stainless or plated steel and protected by anti-vandalism polyamide caps.