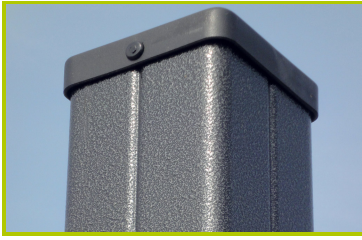




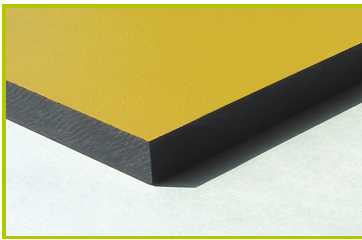
Diabolo

(technical specification)

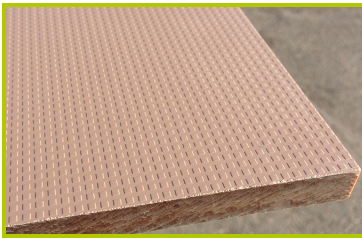
J38121



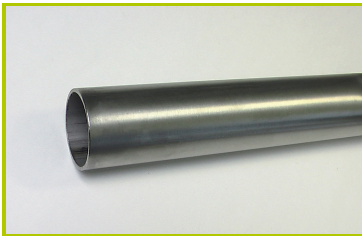
1- **The 95 x 95mm posts** are made of painted galvanised steel, ensuring robustness and durability. The caps are made of injection moulded polyamide.



2- **The coloured panels** are made from a 13mm thick compact material (HPL). Robust in construction, it has excellent weather and vandal resistance properties.



3- **The platforms** are made from a 12.5mm thick textured and non-slip compact material (HPL).



4- **The tubes** are made of 40mm diameter stainless steel, guaranteeing lasting durability and reliability of the equipment.



5- **Injection moulded polyamide fixings** connect the posts with the platforms and the various play features. They are non-toxic, flameproof and U.V. resistant. The thickness of the polyamide makes the equipment both strong and vandal resistant.



6- **The roof** is made of 10mm thick polyethylene plates.



7- **The 16mm diameter ropes** are made of galvanised steel cable covered with polyester. The cables are linked together and held in place by injected polyamide spheres.



8- **The net fittings** are made of polyamide and are used to link three cords together.



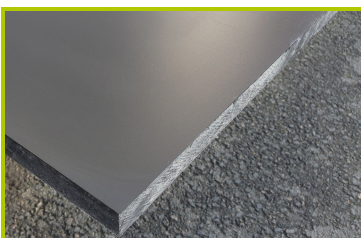
9- **The net fittings** are made of polyamide. The fittings are composed of two distinct parts for ease of maintenance of individual strands.



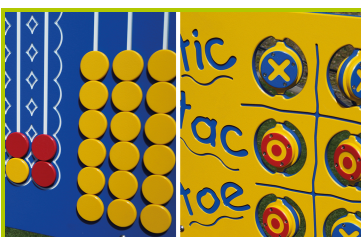
10-**The sliding surface** is made of 2mm thick stainless steel, which is shaped, bent and rolled from one piece.



11-**The steps of the catwalk** are made with a non-slip rubber overmould.



12-**The blades of the gangway floor** are made of polyethylene, 20mm thick.



13-**The play panels** are made of polyethylene.



14-The fixings are made of stainless or plated steel and protected by anti-vandalism polyamide caps.