



2+



10



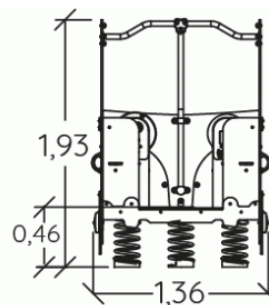
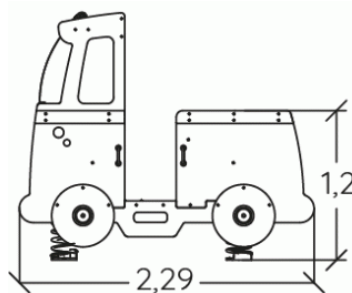
0,6m



1 = 2,29m
2 = 1,36m
3 = 1,93m



Physical inclusion
Sensory inclusion
Cognitive inclusion



Play value : **10**

role play



x1

meeting



x1

resting



x1

handling



x2

balancing



x1

thinking



x1

tactile stimulation



x2



Oscillate

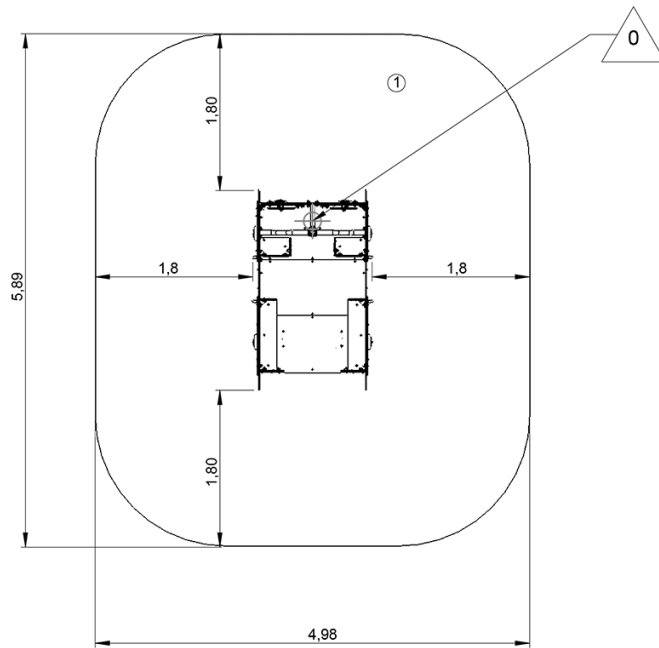




x1

Installation of equipment

IMPORTANT: It is essential to refer to the installation instructions for information on the size of the safety areas.

-  Impact area (minimum normative surface)
-  Free space



| | | |
|---|---|---|
| |  |  |
| 1 | 0,6m | 27,5m ² |



2



5h00



0m³



27.5m²



280kg



13kg

