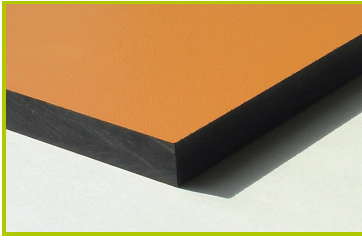


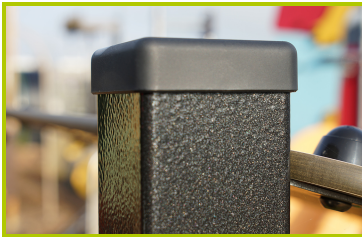


Water Play (technical specification)

J1715



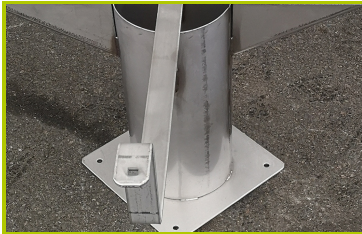
1- **The coloured panels** are made from a 13mm thick compact material (HPL). Robust in construction, it has excellent weather and vandal resistance properties.



2- **The 70 x 70mm posts** are made of painted galvanised steel, ensuring robustness and durability. The caps are made of injection moulded polyamide.



3- **The water trays** are made of polyester, and fitted with a tamperproof plug providing a fast emptying system.



4- **The round post** is made of stainless steel.



5- **The tubes** are made of stainless steel, guaranteeing lasting durability and reliability of the equipment.



6- **The fixings** are made of stainless or plated steel and protected by anti-vandalism polyamide caps.