



Adventures in nature

(technical specification)

J49147



1- **The different posts** are made from sap free robinia. The robinia is sanded and has had its bark removed. Robinia is naturally rot proof and does not require any additional chemical protection; it is equally extremely resistant to attacks from external sources (insects, fungi, climatic variations), guaranteeing the long term durability of the playground equipment.



2- **The boards** are made from sap free robinia (plank sizes: 22 / 27mm). The robinia is sanded and has had its bark removed. Robinia is naturally rot proof and does not require any additional chemical protection; it is equally extremely resistant to attacks from external sources (insects, fungi, climatic variations), guaranteeing the long term durability of the playground equipment.
The coloured panels are using a staining process.



3- **The tubes** are made of 40mm diameter stainless steel, guaranteeing lasting durability and reliability of the equipment.



4- **The 16mm diameter rope** is made of galvanised steel cable covered with polyester.



5- **The fixings for the nets and chains** are made from aluminium.



6- **The abacus spheres** are made of polycarbonate sheets.



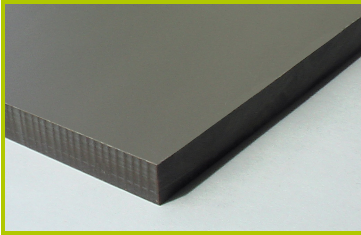
7- **The chains** are made of stainless steel.



8- **The buckets** are made of rotomoulded polyethylene.



9- **The abacus pieces** are made of robinia.
The rail is made from 10mm diameter stainless steel.



10-**The coloured panels** are made from a 13mm thick compact material (HPL). Robust in construction, it has excellent weather and vandal resistance properties.



11-**The fixings** are made of stainless or plated steel and protected by anti-vandalism polyamide caps.