



0.5+



19



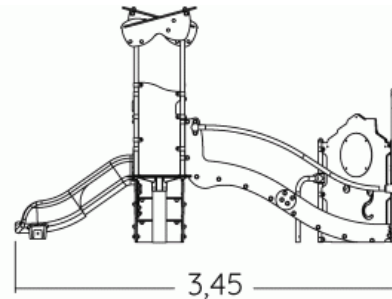
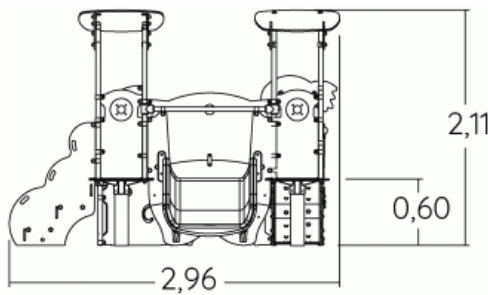
0,6m



1 = 3,43m  
2 = 2,93m  
3 = 2,12m



Physical inclusion  
Sensory inclusion  
Cognitive inclusion



Play value : **23**

role play



x1

sliding



x1

meeting



x1

handling



x4

crawling



x3

hiding



x1

taking shelter



x2

tactile stimulation



x4

visual stimulation



x2

climbing



x2



getting across

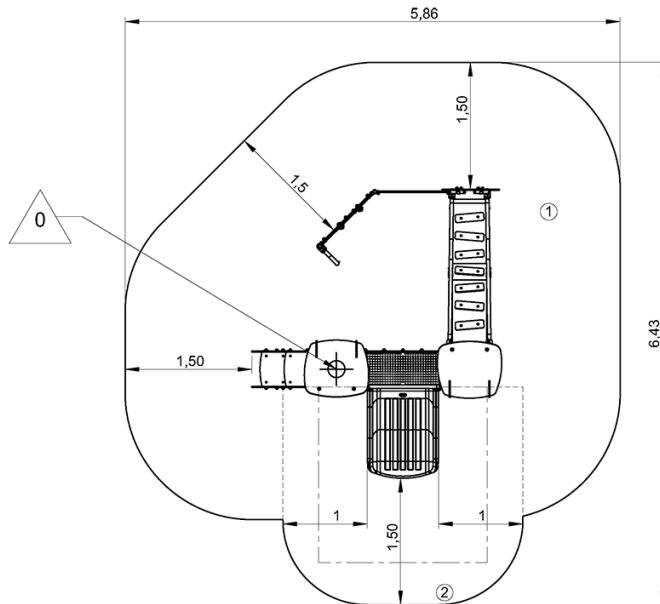




x2

## Installation of equipment

**IMPORTANT:** It is essential to refer to the installation instructions for information on the size of the safety areas.

-  Impact area (minimum normative surface)
-  Free space



|   |  |  |
|---|---|---|
| 1 | 0,6m  | 23,5m <sup>2</sup>  |
| 2 | 1m  | 7m <sup>2</sup>   |



2



08h00



0.36m<sup>3</sup>



30.5m<sup>2</sup>



336kg



54kg

